

CODE NUMBER

3366116

DESCRIPTION

Sloan® XLERATOR® Sensor-Operated Wall - Surface Hand Dryer EHD-502-ECO , 208/277V, Sloan® XLERATOR® Sensor-Operated Wall - Surface Hand Dryer.

DETAILS

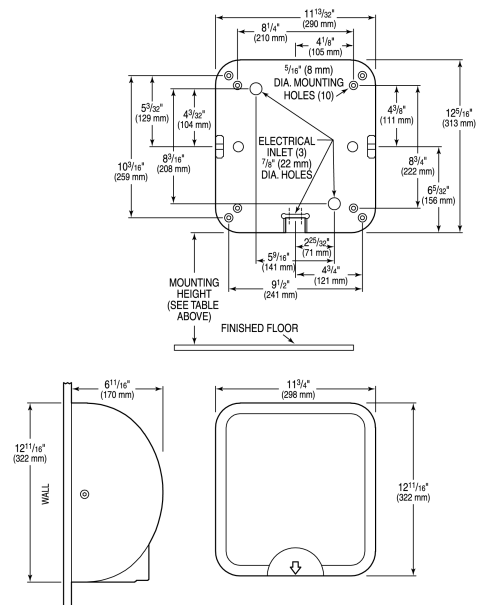
- Finish: Brushed Nickel (BN)
- Voltage: 208/277V ()
- Wattage: 50/60Hz ()
- Amperage: 2.0-2.2 ()
- Mounting: Wall - Surface
- Power Type: Hardwired
- Depth: 12 86/125" (322mm)
- Height: 6 86/125" (170mm)
- Width: 11 3/4" (298mm)

FEATURES

- Automatically operates by means of an Infrared Optical Sensor with 35-second lockout feature, it activates a strong controlled air blast
- Residual moisture is evaporated with a warm stream of air up to 135°F/57°C
- One-piece heavy-duty rib reinforced die cast zinc alloy housing minimizes damage to dryer in abusive environments
- 95% cost savings vs. paper towels
- Can be easily positioned to comply with ADA requirements or for juvenile height
- 10 second dry time
- Hygienic hand dryer solution
- can install multiple units on one circuit
- Available in Polished White, Matte White, Polished Chrome, Brushed Nickel and Graphite
- Virtually maintenance free

DOWNLOADS

- [Sloan XLERATOR and Sloan XLERATOR Eco Hand Dryer Instructions](#)
- [Additional Downloads](#)



COMPLIANCES & CERTIFICATIONS



(BAA Compliant, cUL Certified, EPD, Proposition 65, UL Certified)

RECOMMENDED SPECIFICATION

Sloan Xlerator Sensor Operated Hand Dryer. 208V/230V Brushed Nickel Finish.

NOTES

All information contained within this document subject to change without notice.